

# Accepting new patients at our primary care clinics!



**SUMMIT PACIFIC**  
• HEALTHCARE CLINIC •  
600 East Main Street  
Elma, WA 98541



**SUMMIT PACIFIC**  
• McCLEARY HEALTHCARE CLINIC •  
105 West Simpson Avenue  
McCleary, WA 98557



**ELMA**  
**FAMILY MEDICINE**  
575 East Main Street, Building 2  
Elma, WA 98541



Shawn Andrews, MD



John Rodakowski, MD



Tammy Moore, DNP



Mary Ellen Biggerstaff, DNP



Amy Heckler, DNP, PMHNP



Terra Grandmason, ARNP



Bonnie McReynolds, ARNP



Heather Latham, ARNP



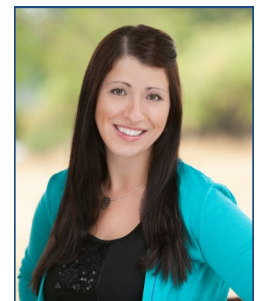
Mary Schroeder, ARNP



Molly Mellon, ARNP



Lindsay Carlson, PA-C



Bonnie Anderson, PA-C

Call 360-346-2222 to schedule an appointment at any one of our clinics!  
[www.SummitPacificMedicalCenter.org](http://www.SummitPacificMedicalCenter.org)

When you visit one of our three clinics: Summit Pacific Healthcare Clinic, Elma Family Medicine, or Mark Reed Healthcare Clinic, your primary provider may be a physician, nurse practitioner or physician assistant. These medical professionals all have advanced training and experience providing high-quality, patient-centered health care services.

*Some of our patients ask for more information about the role and qualifications of nurse practitioners and physician assistants. Here are a few details.*

### **What is an Osteopathic Doctor?**

Doctors of Osteopathic Medicine (DOs) are fully licensed physicians. They provide a full range of services, from prescribing drugs to performing surgery, and they use the latest medical tools. But DOs offer something special, their unique approach to patient care. Osteopathic physicians are trained to: teach patients how to prevent illness and injury by maintaining a healthy lifestyle. They look at the whole person to reach a diagnosis without focusing just on symptoms. They believe that all parts of the body work together. They perform osteopathic manipulative treatment (OMT), a hands-on approach to diagnosing, treating, and preventing illness or injury.

*More information: American Association of Colleges of Osteopathic Medicine website at [www.aacom.org](http://www.aacom.org).*

### **What is a Nurse Practitioner?**

Nurse practitioners are Advanced Practice Registered Nurses with a master's (ARNPs) or doctoral degree (DNP) and advanced clinical training. Like physicians, nurse practitioners are trained to assess and examine their patients, establish medical diagnoses and develop treatment plans. In Washington State, nurse practitioners may practice independently and prescribe medications. Nurse practitioners emphasize health promotion, disease prevention, and management of common acute and chronic conditions, while taking into consideration the patient and their family. Nurse practitioners perform all types of procedures, including dermatological procedures, joint injections, IUD placement and many others, with personalized care.

*More information: American Association of Nurse Practitioners website at [www.aanp.org](http://www.aanp.org).*

### **What is a Physician Assistant?**

Certified physician assistants (PA-Cs) are graduates of an accredited physician assistant educational program and are state licensed to practice medicine with the supervision of a physician. The course of study for physician assistants is rigorous and intense. In addition, physician assistants complete more than 2,000 hours of clinical rotations, with an emphasis on primary care. Physician assistants are trained to perform physical examinations, diagnose and treat illnesses, order and interpret lab tests, perform procedures, assist in surgery, provide patient education and counseling, and make rounds in hospitals and nursing homes. In Washington State, physician assistants can prescribe medications.

*More information: American Academy of Physician Assistants website at [www.aapa.org](http://www.aapa.org).*